

School Recovery Plan re Covid19

31/5/2020 Update

All plans are driven foremost by a concern for the health of pupils and of staff.

Section 1: Arrangements for the coming week

Summary of timings for those in **Reception** and **Year 6** who have chosen to send their children to school from week beginning June 1st:

Reception

Class 2 starts on Tuesday 2nd June (for one day only this week)- 10-2pm. Enter via Side Gate and go to FS garden. Class 2 bubble groups will be called 2a, 2b and 2c.

Class 3 starts on Friday 5th June (for one day only this week)- 10-2pm. Enter via Side Gate and go to FS garden. Class 3 bubble groups will be called 3a, 3b and 3c.

Year 6

Class 14 starts on Tuesday 2nd June (for one day only this week)- 9-3pm. Go through the Car Park directly to the Netball Court. Class 14 bubble groups will be called 14a, 14b and 14c.

Class 15 starts on Friday 5th June (for one day only this week)- 9-3pm. Go through the Car Park directly to the Netball Court. Class 15 bubble groups will be called 15a, 15b and 15c.

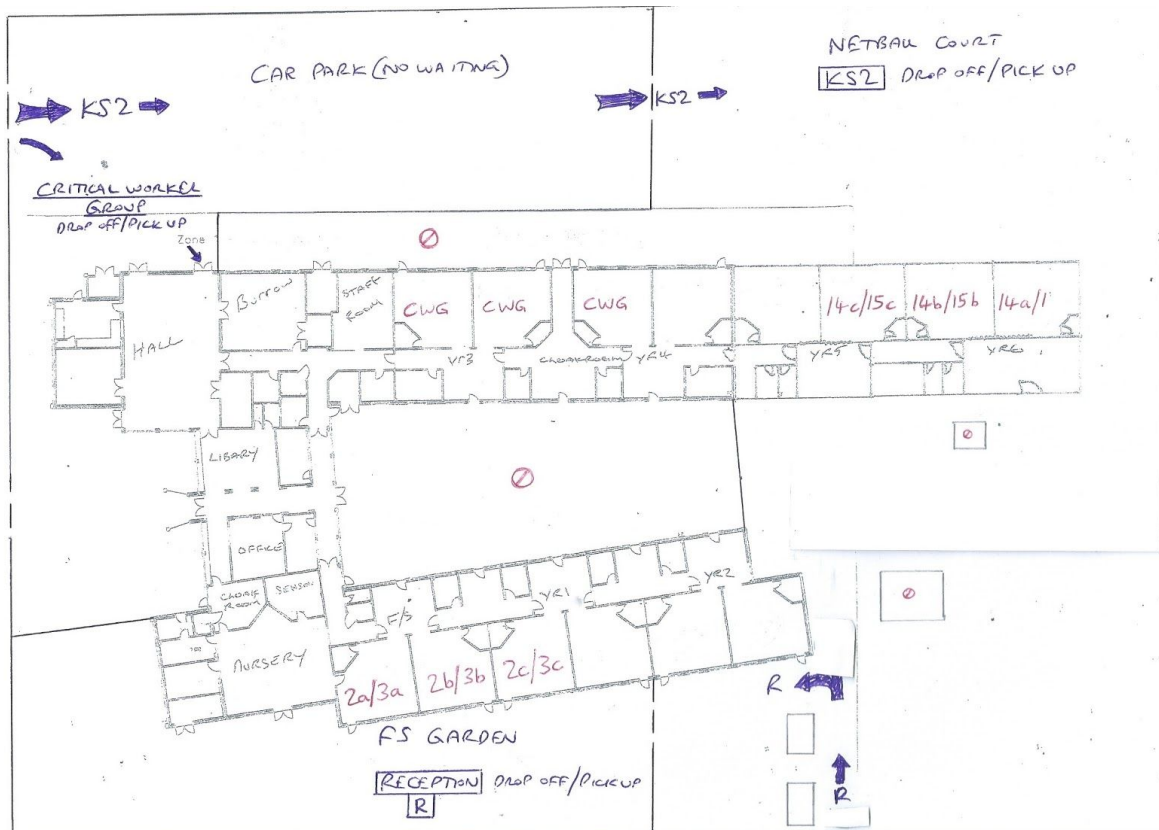
On Monday 1st June you will receive a **notification from school telling you which bubble group (a, b or c)** and which member of staff your child will be with.

Critical Worker Group continues to enter through Hall side doors between 8.40 and 3.10pm (by prior individual arrangement with school).

All other children (**including those in the above classes who choose not to attend**) will continue to receive online teaching provision.

The map below highlights the **necessary routes to drop off and pick up points** to help you plan ahead. These will also be signposted onsite.

School Recovery Plan re Covid19



Section 2: Arrangements for Week 2

Class 2 bubbles can attend on Monday 8th June and Tuesday 9th June 10-2pm.

Class 3 bubbles can attend on Thursday 11th June and Friday 12th June 10-2pm.

Class 14 bubbles can attend on Monday 8th June and Tuesday 9th June 9-3pm.

Class 15 bubbles can attend on Thursday 11th June and Friday 12th June 9-3pm.

Section 3: Arrangements for Week 3 and onwards

As long as the first two weeks go to plan, Year 1 will be introduced to the timetable on the same basis as above, in Week 3.

During this time we will be constantly reviewing official guidance to see if other year groups are expected to attend but as you can see from the map there is no capacity for this if the current protective measures are still advised and in place.

Now please read the modified 21/5/2020 update below for the fine detail- **especially text in blue/italic** for changes and clarification. You will note from the additional points that this is far more complicated than normal school planning even though it involves less pupils onsite. Also note that all staff are being used to implement this work, even though certain year groups are not yet readmitted to school the teachers of those year groups are required onsite to teach other groups.

School Recovery Plan re Covid19

Parent and public opinions range the spectrum and show sharp division about lockdown and wider school reopening. We are navigating a path through this which we acknowledge will not suit everyone's needs and opinions.

For even more information please see the FAQs page on the website below the link to this document.

21/5/2020 Update

The government statement: "We anticipate, with further progress, that we may be able, **from** the week commencing 1 June 2020 to welcome back more children to early years, school and further education settings. We will only do this provided that the five key tests set by government justify the changes at the time, including that the rate of infection is decreasing and the enabling programmes set out in the Roadmap are operating effectively. As a result we are asking schools, colleges and childcare providers to plan on this basis, ahead of confirmation that these tests are met."

This update is a long read, there is a lot to cover. In trying to keep a balance for an audience of parents which ranges from those who just want to know what they have to do to those who want to further understand the reasoning, the update is set out in sections. **Go to Section B and C if you just want to know what to do.**

~~At the end of this update is an attendance survey (Section E). All Nursery, Reception, Year 1 and Year 6 parents need to follow the link to the attendance survey after reading this update. Now closed, please email office.2609@ladygrove-park.oxon.sch.uk with any changes to circumstances.~~

Share this communication with all relevant parties. *40 families did not respond to the survey. This has delayed our planning and also concerns us that not everyone has read our guidance.*

A. Rationale about Returning to School

1. Levels of anxiety are high for all. Anticipation of the next steps in June, along with some negative media coverage, certainly doesn't help the situation. Our first priority in the recovery plan is health and immediately second is Mental Health/Well Being. *Your child's first day back will focus on helping them to acclimatise to being back and the new systems.*
2. The planning stages have been very rigorous. We will do our best with the implementation, using the current knowledge we have of the situation. But, schools are not hospitals and teachers are not doctors. As the DFE states: 'schools should use their best endeavours to implement the government plan'.
3. *Clarification- the government have not yet allowed reopening for Years 2, 3, 4 and 5.* They will continue to be catered for with home learning but staff will now be further stretched between provision for learning onsite while also online. Refer to the last

School Recovery Plan re Covid19

point in Section B below. *If your child is in a year group applicable to attend (FS, 1 and 6) but you choose not to attend, online teaching provision will continue on the above terms.*

4. Protective measures have been put in place onsite and staff will be nurturing children and supporting them through, albeit within our new limitations which make this more difficult, as below.
5. We need to manage your expectations: our planning emphasises minimising any issues for health and therefore has to address difficult issues including children not being with friends, children being anxious about coming back and possibly being upset by the change.
6. You will find some of this guide to be unapologetically strict. This is to minimise risk onsite. Of highest priority, **if anyone in your household has symptoms- you cannot enter our site and should be isolating at home.**
7. We are very aware that the most anxious period will be the run up to the first day back. The hardest part of this may be when you drop off your child, for some it will feel like the first day of school all over again and this feeling might not hit them until they get to the school gate. In normal times, we have systems in place to help anxious children in. Unfortunately, there will be no opportunity and no spare time to have a quick catch up at the school door with the teacher. It is important that you consider your Plan B (such as cancelling commitments on that first day) in case drop off doesn't go to plan at school.
8. We won't have the capacity to handle the usual type of queries which, in normal times, arise at drop off. If you have any query which makes you uncertain about attending then don't attend and put it in an email. We can't risk having 'a quick word' at the door and the teachers will be busy from the very moment we open, mainly ensuring social distancing is happening. This is not business as usual.
9. Considerations for staff and other adults: the government have asserted that there is strong evidence on how children do not spread the virus between each other and are affected less but there is no similar evidence on how staff members would be affected or how your household would be affected. Therefore staff will be using PPE when it is deemed necessary and they will be acting for their own distancing safety as well as all others, see Daily Routine section. *Bear in mind that staff are anxious to do their best to support the children but also for their own safety.*
10. You might have missed the contentious guidance that social distancing can be relaxed in primary schools but only as long as contact is minimised and cleanliness maintained. We will continue to go beyond this guidance hence the slow start from June 1st and the smaller groups (not up to 15 as advised). We have also been instructed to put small groups in 'bubbles' which do not interact. I'm sure you can understand the headaches hidden within such a broad expectation, which includes children not being able to interact with some friends or staff. Of course, we will do

School Recovery Plan re Covid19

what we can but this guidance is at odds with the assertion that schools will reopen to help childrens' social development.

11. The government have stated that the youngest (FS and Year 1) return first where possible to ensure parents can go back to work. However our assessment, involving protective measures, means that of the youngest year groups, only Reception can return first. To admit Year 1 at the same time would cause too much strain on a system which needs to be tested safely with smaller numbers across school. *Our gradual ramping up of R, 1 and 6 through the weeks will ensure we can attempt to better handle social distancing, mental health issues, arising safeguarding matters and staff vulnerability.*
12. Year 6 can return at the same time as Reception because they are more capable of handling social distancing as a group. Again to manage your expectations, the government have asserted that Year 6 should go back in order to achieve closure and be socially ready for secondary school. This is unlikely to happen as you would hope (in any school) since they will only be placed in small groups with a member of staff and cannot mix.

B. The Intended Offer and Attendance Expectations

13. Gradual ramping up week by week based on small groups (bubbles).
14. In the first week, if your child is in **Reception or Year 6** they can attend for **one day**, if you want them to (*it is not currently an expectation to attend- see point 34*) . This will be set by the school as either Tuesday 2nd June or Friday 5th June.
15. In the second week (**from Monday 8th June**) Reception and Year 6 will attend for **2 days**, either Mon and Tuesday consecutively or Thursday and Friday consecutively, set by school.
16. In the 3rd week (**from Monday 15th June**), **Year 1** is expected to be added to this 2 day a week system. Further updates will clarify this.
17. Note that Year 6 is prioritised over Year 1 because it is not prudent to have too many younger children onsite at first and Year 6 are more likely to quickly achieve the new distancing expectations as a group.
18. Years 2, 3, 4, 5 please read the final point of this section.
19. Staff Reopening Training Days (Health and Safety matters): Mon 1st June and Thurs 4th June school will only be open for critical workers childcare to allow staff to discuss final details and acquaint themselves with the new systems.
20. **School timings are staggered** until further notice. **Being prompt is essential** and loitering either before or after drop off is not allowed as it will cause bottlenecks.
21. **Timings are:**
Reception: 10am to 2pm
Year 6: 9am to 3pm
Critical Worker Childcare continues to be between 8.40am and 3.10pm.

Starting in the third week:

Year 1: 9.30am to 2.30pm

Wednesdays are set aside for the deep clean team working between the change of bubbles. This also happens on Friday after school.

School Recovery Plan re Covid19

22. Siblings in different year groups: with staggered timings we recognise that you will be coming back and forth and cannot wait onsite between these times. We are sorry but this is unavoidable.
23. 'Bubbles' of children: All classes are split into groups of 10- now commonly referred to as bubbles. These bubbles cannot mix and since they are small it is not likely your child will be with their own teacher. In our very early original plans we would have rotated pupils to see their friends and own teachers but this is not allowed under the safety bubble concept. I'm sure you are aware that all teachers are trained for all year groups at primary and all TAs are more than able to teach small groups especially with teacher planning/guidance. You will be informed of your child's lead staff member and which classroom they will be in, in good time before starting back. *All children will now be allocated a bubble (even if there has been no parent response or if a parent has decided not to admit their child as soon as it is applicable) Parents can change their mind later (to stop or start). Starting later than the applicable time for your child is entirely acceptable. Notify us by email with 2 days notice.* ~~Please see the end of this section about making the decision for your child to attend under these circumstances.~~
24. Please note pupils will not be moved from the bubbles in which they are placed. These will have been carefully arranged according to attendance and pupil needs. *Friendship groups are considered but not as a priority compared to allergies, disabilities, health vulnerabilities and behavioural needs.* There is no time to reorchestrate this preparation safely- moving one child impacts on all the others.
25. Bubbles will have to be entirely removed from school for 14 days if a child shows symptoms while at school- hence the small number in a bubble. *This policy will have to remain in place until we are confident that the government's test and trace system has been fully implemented or a test proves negative. If members of staff are absent for any reason then, due to staffing restrictions, their bubble may not be able to attend school until they return. In this case we will attempt to find cover but it will be highly unlikely because the additional adult must not have been in contact with another group for 7 days previously.*
26. If your child shows symptoms it will be necessary to isolate them away from their bubble until you can pick them up. This will, of course, be done as sympathetically as possible. We will call you to pick up from the front office.
27. If another child has symptoms in your child's bubble during the day, we will communicate this with the parents of that bubble. We will keep the bubble up until the end of their day because protective measures remain in place for everyone in it. In this situation only, you can pick up at anytime but must arrange it with the Front Office.
28. Important to note: your child's set days cannot be changed. This is not a childcare offer, it's reduced education provision.
29. With the small groups, it is also likely your child will not be in their own classroom and they will have limited resources (see 'Movement Around School' below to understand this).
30. Critical workers' children: the key worker group remains the top priority but it will have to remain a separate group. Therefore, you have the hard initial decision between being grouped with your own year group or continuing with the key worker group- children can't mix and can't be moved once your decision is made.

School Recovery Plan re Covid19

31. Critical workers' group: to help us with this more complex attendance routine you will need to email us by Friday 2pm with your childcare arrangements for the following week.
32. For parents of children with EHCPs: in the usual weekly catch ups we will assess the appropriate time for your child to return subject to 'SEN Risk Assessment During Covid Outbreak'.
33. Breakfast Club and After School Club will not be running until further notice.
34. It is important to note that there is **no penalty or negative record** for choosing to keep your child at home under the current guidance. We are only asking for this information in ~~Section E~~ to help finalise our plans onsite and to be sure that we know who is supposed to be present at school. (What is known as a Disapplication Notice is in place nationally to temporarily remove the expectation on schools to ensure pupils' attendance.)
35. *(Now closed- see next point) Please email ~~You must complete the form in Section E~~ so we can be sure who intends to be at school and we don't have to chase each day.*
36. *Clarified: Those who have initially chosen not to admit their applicable child can change this decision of attendance by emailing us but this must be two days before the intended start date, to give us time to do due diligence and make any necessary changes. You can choose to withdraw your child by emailing us the day before you intend to withdraw.*
37. Years 2, 3, 4 and 5 *(and those in FS, 1 and 6 who choose not to attend):* 'dual teaching' will be put in place. The government expects teachers to continue to provide home learning but accepts that the wider expectation for them to provide learning onsite and possibly out of year group will mean that provision will have to change. We are lucky that we have 2 form entry and can currently continue to have at least one teacher from your year group providing home learning. We will endeavour to keep quality high but with the new expectations, the teachers will be stretched between onsite and online much more thinly. *As one of the two deep cleans is on Wednesday, the teachers will also use this day for Planning, Preparation and Assessment time (PPA non contact time is a statutory weekly requirement for teachers). This means that teachers will not be available on Wednesdays but this will give them time to ensure onsite and online materials remain of best possible quality.*

C. Daily Routines

38. Drop off: see our Movement Around School document below *and School Map above*.
39. There should be only 1 parent per drop off/pick up to minimise bottlenecks onsite.
40. We are asked to encourage everyone to walk to school if possible.
41. *We cannot yet be confident that the office will be manned, due to various vulnerabilities and shielding. Please email if you believe you will have trouble with drop off/pick up of siblings in different year groups to discuss this with us.* ~~If you have siblings in different year groups and think you will find it hard to navigate the drop off (even with staggered timings) please bring them to the front office for us to take them to class.~~ At pick up the teacher will hold on to any child until their adult arrives.
42. There is no capacity to aid pupils who find it hard to enter school. There will be no opportunity to make contact and no spare time to nurture an anxious child to the classroom. It is important that you consider your Plan B (such as cancelling commitments on that first day back) in case drop off doesn't go to plan at school.

School Recovery Plan re Covid19

43. School dinners: We are advised to offer meals to anyone who requires it. These will be in the form of brunch bags. It will certainly not be a problem preparing the food, however, it would help us immensely with movement and timetabling the more pupils are self sufficient with packed lunches. Nevertheless, if you choose school meals this must be registered by Monday 9am of that week. Day to day choices cannot be catered for. Last minute requests will not be possible unless it is an emergency. We will endeavour to produce the menu for you (on the website) before we return.
44. Lunch will be eaten at class desks by all children (for Year 6 this is already common).
45. Children's Belongings: *It is vital that your child attends being able to holding their own **lunchbox, water bottle (and suncream/coat depending on the weather)**. Any forgotten items will be much harder to submit to school at a later time. IE. The office may not be immediately occupied and hand over would involve 2 further external contact situations.* We will obviously be using our outdoor area where possible so please ensure your child has suncream applied before they arrive on sunny days. You may also give them cream to keep and apply in the day but there are some good 'all day' creams which could be of use.
46. Uniform: No need for uniform- the focus is on clean clothes each day. This is not to be treated as a non uniform event- no fashion accessories.
47. Most helpfully, clothes which are suitable for outdoor sport so there is no need for children to change.
48. As far as possible, please coach your child to get dressed by themselves. Of course, staff will help if necessary but it would be best to minimise this need.
49. In FS it would also be prudent for children to have a bag of spare clothes which can be kept under their desk.
50. Environment: For more detail on your child's environment and the changes to school please see the 'Movement Around School' document below.
51. Behaviour: all children will be supported and coached in the new, temporary rules around keeping physical distance. If they unintentionally invade distance they will be helped and supported to learn what to do instead (to be clear they will not be told off). However, if a child purposefully breaks physical distance with unkind aims this will have to be regarded as a danger to safety for all. Sanctions will need to be used in line with the normal behaviour policy (red rule for being unsafe). If this is repeated it may involve official exclusion (based on the pupil's understanding of their intentions to harm). This is for high level issues. **Please be assured we will treat every child sympathetically to their level of understanding of the situation.**
52. First Aid: carried out as normal but staff will wear PPE if needed.
53. Toileting for young or vulnerable: carried out as normal but staff will wear PPE. *To clarify- this point refers to those children who, through disability or other special need, usually have staff support toileting. All other children can only have staff help if they get into difficulties.*
54. Playtime: will be in small and dispersed groups. Children will continue to be encouraged to practice social distancing.

School Recovery Plan re Covid19

55. Resources: only bring lunchbox, waterbottle, suncream if needed (and personal pencil case for Year 6). Keep all belongings on own table. School can provide resources which will then be kept by that child throughout that day. Year 6 will be sent a list of what to bring.
56. Home/School Communication: It remains most efficient for us to tell you everything in this update instead of replying to individual emails about general operations. Everything we know will continue to be in this update, individual discussions will take place with parents whenever specifically needed, mainly for 'vulnerable' children. The Front Office will hopefully be manned 8-4pm but email remains the best option. Emergency and personal issues will be prioritised. Therefore, responses to general queries about our practices will be delayed and most of these will point you back to this update guide.
57. Cleaning: a much enhanced routine. We are fortunate to have always had a cleaning team which works through the school day, not just after school. Nevertheless, deep cleaning takes place after each 2 day period.
58. Remember to complete Section E.

D. Acknowledgement

59. Remember, this is all temporary.
60. We will be constantly reviewing and adjusting for the best for the children and the safety of our staff.
61. These plans are fragile- for example, if one person falls ill it may be difficult to find further cover.
62. This update forms only a fraction of our in depth planning. The government have told us to expect a final announcement on May 28th. You will understand that this gives us only a few days before opening. We will react as quickly as possible.
63. If the government delay opening we will attempt to enact the same plans but at the later date- therefore eliminating the need for yet more information. However, from experience of these announcements, the decision might not be a straight forward open or delay. As ever, we will keep you informed with what we know.
64. Please bear in mind that many staff are anxious too. We have to enact strict controls to help shield staff who are vulnerable or have vulnerable at home.
65. When your child returns they will be cared for and given the best possible approach to their development academically and socially but only under the (albeit temporary) limitations with which we are given.
66. At any point that protective measures are still deemed to be necessary, such as social distancing, the normal running/full capacity of a school is impossible.
67. Face-coverings vs PPE: Government advice- "Face-coverings are not intended to help the wearer, but to protect against inadvertent transmission of the disease to others if you have it asymptotically..." "...Face-coverings should not be used by children under the age of two, or those who may find it difficult to manage them correctly, for example primary age children unassisted..." The questions we had to answer for staff wearing PPE included: how to assist when a large number of children need help, what to do when someone has a cold, how to deal with first aid. In answer: staff will

School Recovery Plan re Covid19

certainly be allowed to wear a mask if this makes them more comfortable in these situations. At this time staff will be mindful of nurturing against the childrens' anxiety, even through the mask.

68. Protective measures are in place to reduce the risks. The risks are still somewhat unclear but the government has advised that schools should begin to widen attendance. Therefore, we must ask you to acknowledge that if you choose to admit your child to school you are agreeing with our current methods and our intentions of keeping your child safe within the limitations of the current knowledge of the virus.

Our plans will now be carefully orchestrated, continuously evaluated and based on a dynamic assessment of risks as we currently understand them.

I speak on behalf of all the staff when I say how devastated we are that we can't run a normal summer term for the children with all the usual exciting social events and academic activities. However, as a community we all understand why these strict and detailed measures are very important right now.

Movement Around School and Changes to the Environment

I'm sure you have all been frustrated at some point in the last few months by an unclear direction plan in a shop or elsewhere. People get frustrated because they don't know what the new rules are. With this in mind, we have been working on a movement around school plan. I'm sure it's not perfect but it will be backed up by clear signage onsite and a map available on a future update.

School will also send out some prompts for following protective measures for preparing the children at home before attending school.

- Attempting to keep social distance maintained is a priority.
- The car park will be kept clear of cars. This will be one area for parents to drop off pupils. This being largely empty, people will be able to keep better social distance.
- Staggered start for relevant year groups and critical worker groups to ensure no bottlenecks. Each group goes to a different area of school.
- It is vital you turn up at the start time, not before or after. If you are early this may cause further bottlenecks. If you are late the class will already be in their room. (See Front Office section below.)
- No markings for social distancing outside. We have made this decision because we are lucky to have large outside play areas which lead directly to classrooms. All parents to keep social distance as they would when out in the community. All parents are in charge of their children and their distance management until they are handed over the staff.
- As a new general rule on school premises: travel on the right (down corridors, along pavements and through entries). See photos below.

Drop Off/ Pick Up Points - All classes will be signposted and all entry to classrooms will be directly through playground doors (not the courtyard).

School Recovery Plan re Covid19

Once we've told you where your child's temporary class is, locate it and use the shortest, most appropriate route to it.

Nursery children (not yet being admitted)

Come through front gate and wait in courtyard (as normal times)

Reception children

Come through side gate and follow the pavement to Reception as normal. Stay on right as you go through the gate towards Reception.

When leaving, stay on the right, the fence has been removed next to the Reception gate and the scooter rack has been removed between the cycle parks.

Key Stage 1 (not yet being admitted)

Come in through side gate and follow the pavement to Reception- wait in the Year 1/FS garden to be called. Do not go in the courtyard as this could cause a bottleneck.



Key Stage 2 (only Year 6 being admitted)

This is very different: Enter through the car park gates, go straight through the car park in to the KS2 playground (these gates will be open for you).

Wait on the KS2 playground to be called.

School Recovery Plan re Covid19

We recommend for you to drop off your child even if they usually make their own way to school. This will help them to navigate the new systems and ensure they are maintaining social distancing on the way to school.

Critical Workers Group

Unfortunately due to the current advice on maintaining a 'bubble' group for the Critical Workers, this group has to remain independent of their own year groups. Parents will therefore need to make the choice initially if they are to keep using the childcare of the critical worker group which remains flexible on timings and days OR if they want their child to join their year group in a bubble. In the case of the latter, they will have to maintain the attendance of the set days of those year groups only..

For drop off/pick up, wait in the car park outside the side hall doors using social distance. Your child will be called in through the hall side doors, the same as we have been doing daily through lockdown for this group.

Front Office

We will endeavour to man the front office during school hours but please ensure you have the email address to hand in case you can't get through by phone. Emails will be dealt with as quickly as possible.

If you are late, or need to pick up your child early, please go to the front office and ring the bell. We will take your child to and from their group. Note: we can only allow one family/household in the office reception area at one time. If there is already someone in the reception area please form a line outside in the front courtyard.

Use the letterbox (which has now been reopened) next to the front doors for any non urgent messages.

There can be no external visitors unless for emergency or as long as professional procedures are followed.

What it looks like in school

We thought it might help your decision making process (see Section E) for you to know what the school now looks like inside.

School Recovery Plan re Covid19

Hall

Tables equally spaced at 2m and a one way system to the hatch which starts in the library and goes out through the main corridor. The environment does not look much different for your child, the main difference will be the low numbers of children in it and markers on the floor and tables telling them which way to go, sit or stand. Children will be guided by staff if needed. No one will be disciplined for accidentally doing the wrong thing.



Creative Areas

We are lucky to have an existing layout which includes extra sinks directly outside classrooms. There are now also hand sanitiser stations in between paired class entries. So, including toilets, lots of areas to wash hands.

There are no curtains at the class entrances anymore but the dividing screens we use in the creative areas are now in front of the entrances. This is to help the children not to walk straight out into the corridors. This represents a minor change to what they are used to- same furniture, different positioning.

School Recovery Plan re Covid19

Corridors

Everyone can travel down our wide corridors as long as they stay **to the right** next to the wall. There will be guide tape down all corridors which helps children stay in single file and stick to the right.

When they get to a door, it will normally be open, unless it's a fire door. There is tape to show that they must wait before the door if someone else is going through it. If there are lots of people then they must take turns from each direction. Apart from the tape there is no change to what they are used to. Similarly to supermarkets, there are times when pupils will pass each other slightly within the 2m distance, schools have been advised this is acceptable.



School Recovery Plan re Covid19

Toilets

Now have place markers in them to show that there can only be three children in any toilet at one time. Otherwise there is no material change to what they are used to.



KS1/2 classrooms

Tables are laid out with 2m distancing, in rows, to maximise the space.

Soft furniture has been removed and some other furniture which is taking up too much space.

Apart from this the environment looks the same as the children are used to.

However, it is important to note that **it is unlikely your child will be in their normal classroom.**



School Recovery Plan re Covid19

FS classrooms

We have always kept the FS environment quite minimalist in keeping with good practice about child stimulus overload. However, the environment is now much more sparse. Children are not allowed to play with soft resources at all and are also not allowed to share resources. FS staff aim to give your child the best experience within the limitations we have been dealt but these are strict.

In FS we will specifically endeavour to place your child with an adult they have already come to know during the first part of the year.

We can't dress this up, for FS children the experience at school will be different to what they are used to but the staff are of course aware of this and will be nurturing them through it. All children have their own individual spaces marked out at 2m distances and will need to sit at their own tables and chairs with no physical interactions with other children or adults.



School Recovery Plan re Covid19

Children's Belongings

Due to the lower numbers in class each child has a large personal space and whole desk. They will be asked to put all their belongings including coats and packed lunches in this space through the day. For obvious reasons cloakrooms are out of bounds. If we need to give the children any resources from school they will keep them to themselves.

FS children will have a crate each for their belongings, those previously used in After School Club.

Reminders about personal space and cleanliness will continue as before through staff guidance and a number of reminders on posters.

PPE

You will have heard contradictory messages about this from the media. The school approach will be clear. Staff have the option to use PPE if they feel they need to. This is sensible for protection in many different situations such as first aid, if a child is unwell or needs intimate care (for example, the more vulnerable). When the staff use it they will of course be very mindful of how it makes the children feel. But above all it's for everyone's safety.

~~E. Now please complete the survey (deadline Sunday 24th May 11.59pm)~~
[Now closed- please email office with any changes to circumstances.](#)

~~Now that you have been apprised of the relevant parts of our plan please complete the one question survey on Google Forms here:~~

~~<https://forms.gle/gdeVYT93ZZVNY9oM9>~~

~~Critical Workers who originally applied for an emergency child care place (whether they used it or not) need to also complete this survey to tell us their intention when we adjust our offer from June 1st:~~

~~<https://forms.gle/JzQfyH9yqKgFoAnr9>~~

School Recovery Plan re Covid19

15/5/20 update

This particular update comes a day later than I hoped. I've rewritten it several times. Why? The government sent yet further guidance last night, shortly after we had completed all models for safe return to school, based on the documentation from Tuesday night. Then, as before, the most recent guidance raised more questions which have to be answered before choosing a model. We will not move until we have assurances that guidance is based on the priority of health above all.

The process of planning for reopening has involved a complete remodelling of pupil vulnerability strategies, existing class timetabling, timings of the day, pupil flow, signage, on-premises staffing, resources (being added, removed or modified), staff timetabling (mindful of contract expectations), staff vulnerability factors and management of external providers; all involving social distancing factors. Our models currently continue to attempt to maintain proper social distancing expectations, regardless of the current guidance indicating that primary schools can relax social distancing. We still await concrete assurances about social distancing alterations.

Locally and across the country you will see that schools have to act individually due to the vast differences in their premises and population. Due to the huge range of opinions amongst parents about what the government is asking schools to do, it is important for us to manage your expectations about the planning milestones for Ladygrove:

- The SLT have been working on models for reopening, this includes a lengthy Recovery Plan covering all foreseen issues and risks. Our overarching rationale is that we start low and increase the population with confidence, rather than make any misstep by doing everything at once.
- This plan goes to final consultation with staff over the weekend.
- It then goes to our school governors for their scrutiny and feedback (this is a group made up of a balanced cross section of parents with children across the school as well as community members).
- We will then send you the outline and relevant specific parts of this plan.
- At the same time we will send out a Google Form which asks (once you've seen the plan) whether you intend to send your child back to school if/when school opens for them. [It is important to note that there is **no penalty or negative record** for choosing to keep your child at home under the current guidance. We will only ask for this information to help finalise our plans onsite and to be sure that we know who is supposed to be present at school].
- The plan will be finalised and we will continue to communicate it's progress with you through these updates. As you can imagine the plan might be delayed or even removed but we will keep you informed no matter what.

The ultimate Recovery Plan will have gone through those previous weeks of collaborative leadership debate, then whole staff analysis and finally governor scrutiny by the time it is finished. It will be rigorous.

Critical worker onsite childcare

School Recovery Plan re Covid19

If you previously signed up with us as a critical worker you still have the right to take a place using our emergency childcare, if there is no other way to look after your child at home. If you need to do this, email the office- you will be asked standard questions so we can verify your suitability. Please note that this group remains the highest priority group even after other year groups eventually begin to return.

Parents of those children who are vulnerable or have an EHCP: Carol Turner (SENCo) will continue to call you each week. She uses the "SEND risk assessment during the coronavirus outbreak" guidance to discuss your child's schooling with you. When school eventually starts to reopen we will continue to use this guidance as it is a useful way to discuss provision for your child. A detailed risk assessment, which will consider the views of the school, your family and appropriate external agencies (alongside the safety and needs of your child) will inform any changes to provision.

Contact

The school office is still running entirely virtually, please email office.2609@ladygrove-park.oxon.sch.uk with any urgent queries or relevant updates to personal circumstances.

12/5/2020 update

Implementation of 'Phase 2' (reopening to priority year groups possibly in June)

As expected, the Prime Minister gave a general announcement on Sunday evening and the DfE guidance was released on Monday afternoon. Over the last 24 hours we have been analysing hundreds of pages across a number of brand new documents and continuously debating and modelling the guidance to create fine detail for implementation at Ladygrove.

The guidance is thorough but not exhaustive. We would have hoped to start sharing plans with you now but the guidance raises some questions which have to be further addressed by educational experts on our behalf. For example, we need assurances of the thinking behind relaxing social distancing in schools while also not needing to wear face coverings, even though this is a strengthened expectation in general society.

This further debate with the government might cause the guidance to be revised or at least to be clarified, on the basis of the science. We will stand firm on prioritising health implications when making final decisions.

For this reason, we will wait until the next response and clarification before communicating final decisions and we will immediately update you on what is known as Phase 2 (the possible June limited reopening to Year 6, Nursery, Reception and Year 1).

Other Term 6 Matters

School Recovery Plan re Covid19

Reports

Teachers begin to write reports on their children from Term 5 onwards. These are sent to you in July. This year we will send out end of year reports as normal but the format will be different. Due to the usual process of typesetting, writing and proofreading being completely offsite and the more limited amount of subject content, we opted to make the report a more basic format. It will appear as a long letter with title headings for each of the subjects which have been covered at school. The content such as subject progress and next steps will remain the same.

Residential and Trip Refunds

We held on as long as possible but it is clear now that no trips will take place (including swimming and residential). As stated previously, our intention is to refund trips. We can only refund when we ourselves obtain the refund from the organisations involved. This is often not straightforward- we don't simply have a pot of contributed money from which we repay. We are having to chase various companies and insurance companies for it. Be assured that refunds will be with you as soon as we obtain them.

Exams

Schools have been told to use predicted grades and progress monitoring to assign grades for pupils in the absence of any formal tests this year. In primary school progress is monitored like this anyway until the SATs at Year 6. In years other than Year 6, teachers use tests as one factor in their overall judgement for each pupil. This will be the same this year, all teachers will use what they know to make a judgement on pupils' progress up until lockdown started. We are also lucky that we happened to undertake the mid year assessment week across school just before we went into lockdown and therefore have solid information going forward.

Year 6 Exams and transition

For Year 6 the SATs would have been their first formal national test which would give them an outcome based on whether they achieved the expected level. Parents with older siblings may remember that pupils used to be given grades between 3 and 6. This system was superseded nationally 4 years ago. It now simply records whether a child reached the 'expected level for Year 6' or not. Year 6 teachers will be giving these provisional outcomes to Year 6 for the end of this year however, you can rest assured that this is only a very minor part of their transition to secondary. Secondary schools all retest pupils in Year 7 (usually called CATs), there is an in depth transfer online transfer process during which the schools talk to each other and share information. This has been taking place as normal during lockdown and will continue until the pupils go to secondary. Furthermore, sometimes dialogue continues between schools into Year 7 if necessary. The link is strong.

Critical worker onsite childcare

If you previously signed up with us as a critical worker you still have the right to take a place using our emergency childcare, if there is no other way to look after your child at home. If you need to do this, email the office- you will be asked standard questions so we can verify

School Recovery Plan re Covid19

your suitability. As stated again by the prime minister, this child care is still only open to critical workers and vulnerable children, unfortunately this does not include parents who are now being required by their work to attend the workplace. This system remains in place to ensure numbers remain low at the school and social distancing can continue to be carried out effectively at this time. If your workplace puts pressure on you to argue for child care at the school please direct them to the DfE. The DfE will officially repeat this position for them.

Contact

Please remember that the school office is running entirely virtually, please email office.2609@ladygrove-park.oxon.sch.uk with any urgent queries or relevant updates to personal circumstances.